

Volunteered Geographic Information

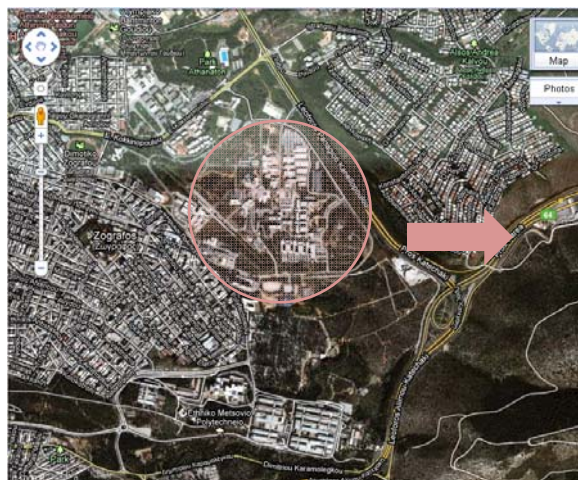
A new era in GIS

Sofia Basiouka
s.basiouka@gmail.com

Chryssy Potsiou
chryssyp@gmail.com

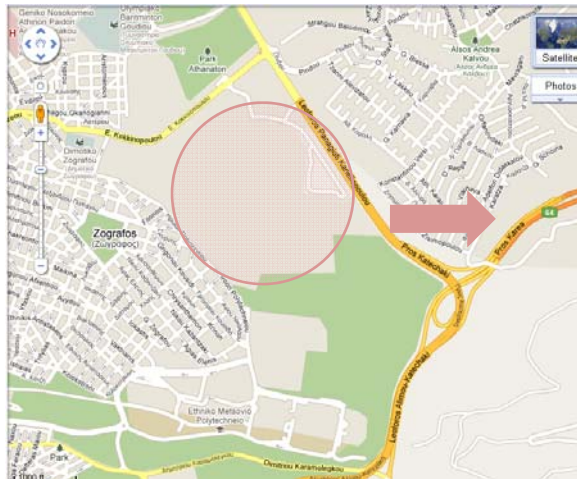
National Technical University of Athens

A representative example



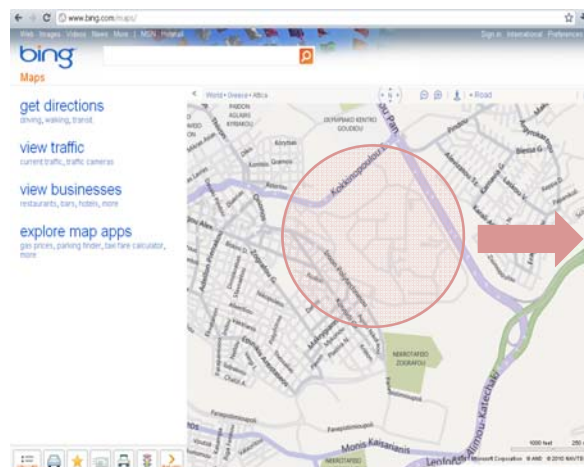
Aerial View of the
National Technical
University of Athens
(Ktimatologio,
orthophotos, 2009)

A representative example



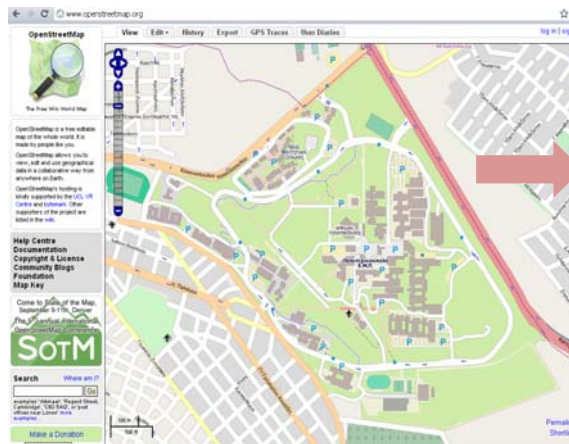
How the area of the University looks like based on Google maps. In one word; blank.

A representative example



How the area of the University looks like based on Bing maps. Only the road network

A representative example



How the area of the University looks like based on Openstreetmap. The area has been mapped in detail by postgraduate students.

A new era in GIS named VGI

- VGI has been incorporated in many daily aspects (navigation, POI).
- Crisis Management (Hurricane Katrina, Haiti)
- Land Management (Kenya – Crowdsourced mapping of Kibera in Nairobi – Africa's largest slum, Cadastre – Greece)

Its use will be increased and its field will be broaden.

VGI for cadastral purposes in Greece I



VGI for cadastral purposes in Greece II

